



210 Cemetery Road, Evansville, WI 53536 / formecology.com
w 608 882 6656 / f 608 882 6657 / info@formecology.com

Newly approved Evansville Peace Garden emphasizes less action, more mindfulness

EVANSVILLE, WI – Last week, the Evansville Peace Garden received final approval by the Wisconsin Historical Preservation Society and is ready to break ground. The garden will be located nearby Seminary Park Apartments at the corner of Fourth Street and College Drive.

“It’s a space for people to contemplate and think and do less of the physical and more of the mindful,” said Denise Janssen Eager, a member of the Evansville Peace Garden committee. The garden’s master plan was created and presented by John J. Gishnock III of Formecology, LLC. Gishnock is part of the design team for the garden. He is also CEO of Formecology, LLC, a company focused on sustainable and ecological landscape design.

“One of the unique features of the Evansville Peace Garden is a labyrinth,” said Gishnock. “We wanted to incorporate a labyrinth into the garden to encourage visitors to de-stress and find inner peace.” Labyrinths, a type of maze, have historically been used in European churches to encourage personal reflection but have recently grown in secular popularity. Nearly 20 labyrinths are now found throughout the Madison area.

Gishnock added that the garden will feature a variety of shade trees like oak and maple. Flowering trees such as Serviceberry will also be considered. The garden will contain a long winding walkway with signage at both ends welcoming visitors.

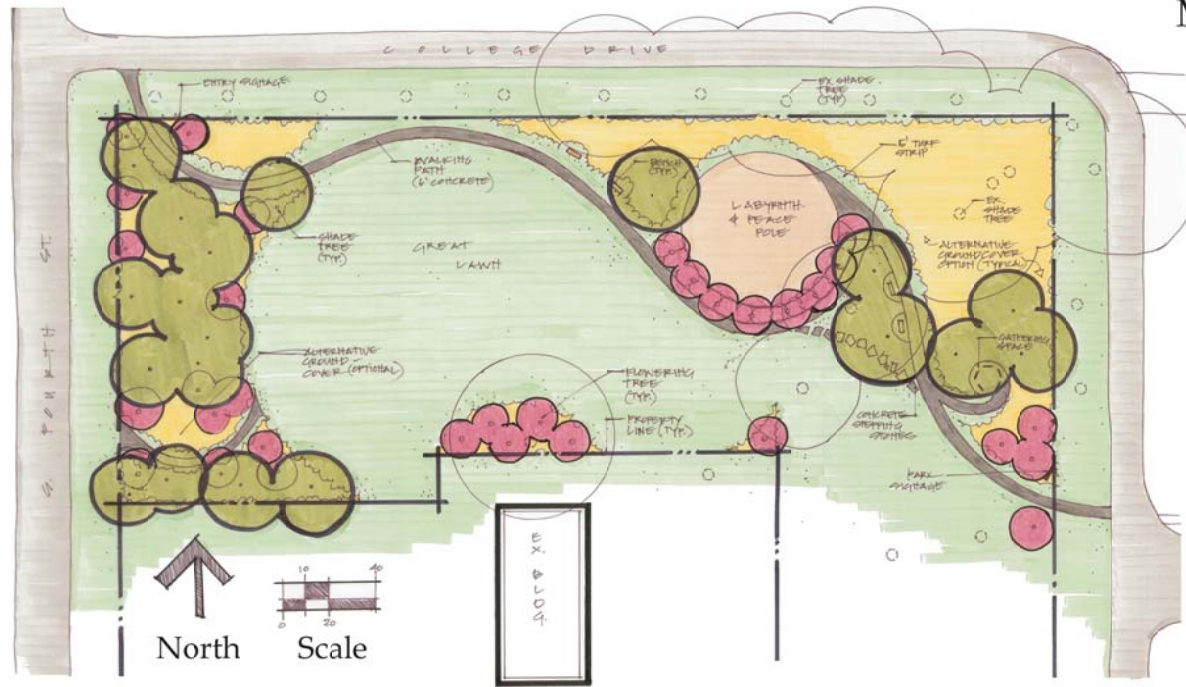
Funding for the first development phase of the Evansville Peace Garden is estimated at \$50,000 and will be accomplished through various grants as well as fundraising campaigns. The committee also hopes that volunteers, especially students from the Evansville Community School District, will help with garden installation and maintenance.

“What we’re interested in is what you would like to give, and not just monetarily,” said Eager.

For more information or to make a donation of time, talent or money to the Evansville Peace Garden, please contact Eager at (608) 333-7451. The committee hopes to break ground in Fall 2013 or Spring 2014.

Formecology is an Evansville, WI based company that designs environmentally friendly and functional landscapes for every type of site from suburban residences to corporate headquarters and public spaces. For the past 16 years, Formecology has utilized natural elements (native plants/local stone/etc.) to artistically complement site architecture and meet a client’s desires. For more information about Formecology, please call (608) 882-6656 or visit <http://www.formecology.com>. Formecology may also be found on [LinkedIn](#), [Facebook](#) and [Twitter](#).

Conceptual Landscape Master Plan



Evansville Peace Garden

Seminary Park, Evansville, WI 53536

formecology LLC
 sustainable outdoor living
 210 Cemetery Road, Evansville, WI 53536 / formecology.com
 w 608 882 6656 / f 608 882 6657 / info@formecology.com

Project #406-12
 3.26.13

Drawn by John J. Gishnock III & Formecology, LLC